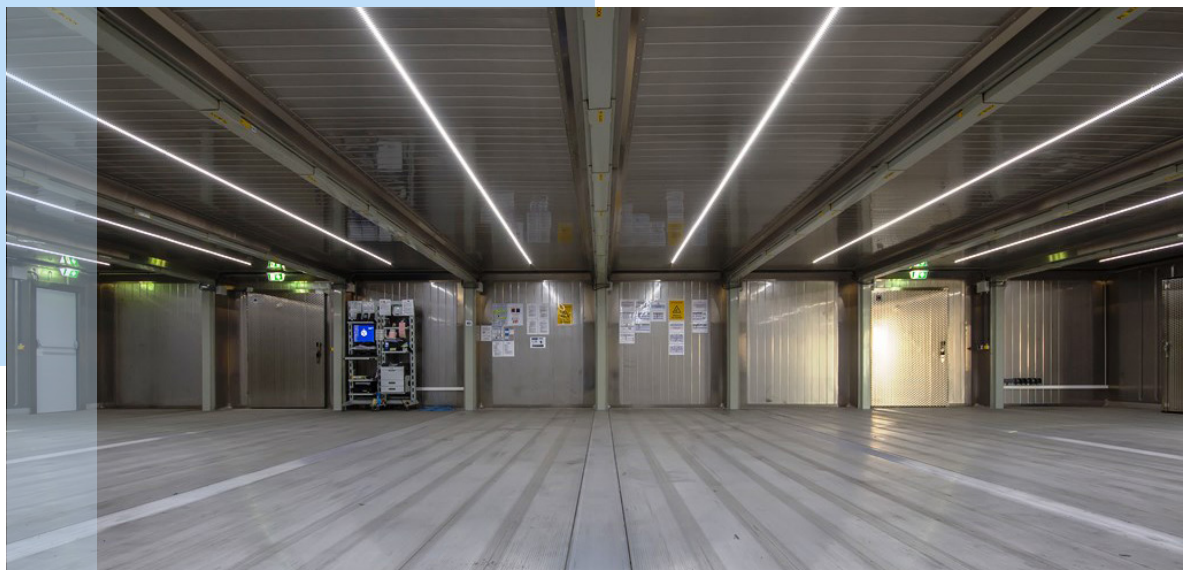




**The Maxi Specials...**Maximum flexibility, maximum capacity. These units, based on the Specials, offer the perfect solution for your (semi-) permanent cold storage problems.

The units are equipped with Thermo King MAGNUM+ machineries, an anti-skid floor, internal lighting and easy-to-open doors. The units are available in many different sizes, ranging from the 40MS2 to the 40MS12 for respectively 51 up to 304 euro-pallet capacity. For extra storage capacity Reftrade offers the Maxi Special XL with an internal height of 2.9m. (!!)



**Standard specifications:**

- Aluminium flat floor (anti-skid)
- Internal lighting (min. 100 lux)
- Double container doors with easy to open butcher-door
- Man-trap release + Alarm
- Chill curtain
- Stainless-steel inside lining

**Options (ref brochure OPTIONS):**

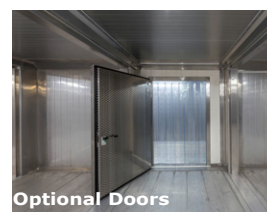
- Ramp (cap. 1.000kg.)
- Legs for load-dock connection
- Door lock
- Temperature alarm/Remote monitoring
- Racks (H.A.C.C.P.)
- Air Dryer
- Side Doors, Sliding Doors, Sectional Doors

**Technical specifications:**

Machinery	Electrical system	Connection	Cable	Cool / freeze capacity	Temperature range
CARRIER or THERMO KING	380/460V 50/60 Hz. 5-polig (3 Fase, Earth, zero)	32 Amp. 6hr. 380/460 V Fuse: 25 Amp.	minimum 15 meters	@ -18°C 4,9 - 6,6 kW @ +2°C 9,4 - 12 kW	<b>CARRIER:</b> -25°C / +25°C < 38°C Ambient <b>THERMO KING:</b> -40°C / +40°C < 38°C Ambient

Model	Loading capacity (Euro pallets)	Internal dimensions (l. x w. x h.) in mm. below load line	External dimensions (l. x w. x h.) in mm.	Door opening (w. x h.) in mm.	Floor surface	Capacity
<b>40MS2</b>	51	11,55 X 4,75 X 2,59 M.	12,19 X 4,90 X 2,89 M.	2,26 X 2,55 M.	55 M <sup>2</sup>	142 M <sup>3</sup>
<b>40MS3</b>	79	11,53 X 7,21 X 2,59 M.	12,19 X 7,35 X 2,89 M.	2,26 X 2,55 M.	82 M <sup>2</sup>	213 M <sup>3</sup>
<b>40MS4</b>	102	11,53 X 9,66 X 2,59 M.	12,19 X 9,82 X 2,89 M.	2,26 X 2,55 M.	110 M <sup>2</sup>	284 M <sup>3</sup>

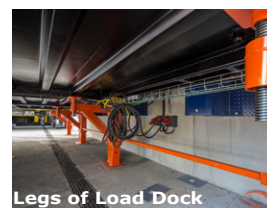
Meer ruimte nodig? Contacteer ons, configuraties tot 12 modules mogelijk.



Optional Doors



Air Dryer



Legs of Load Dock

**CONTAINERS**  
**pallets: 51 > 304**